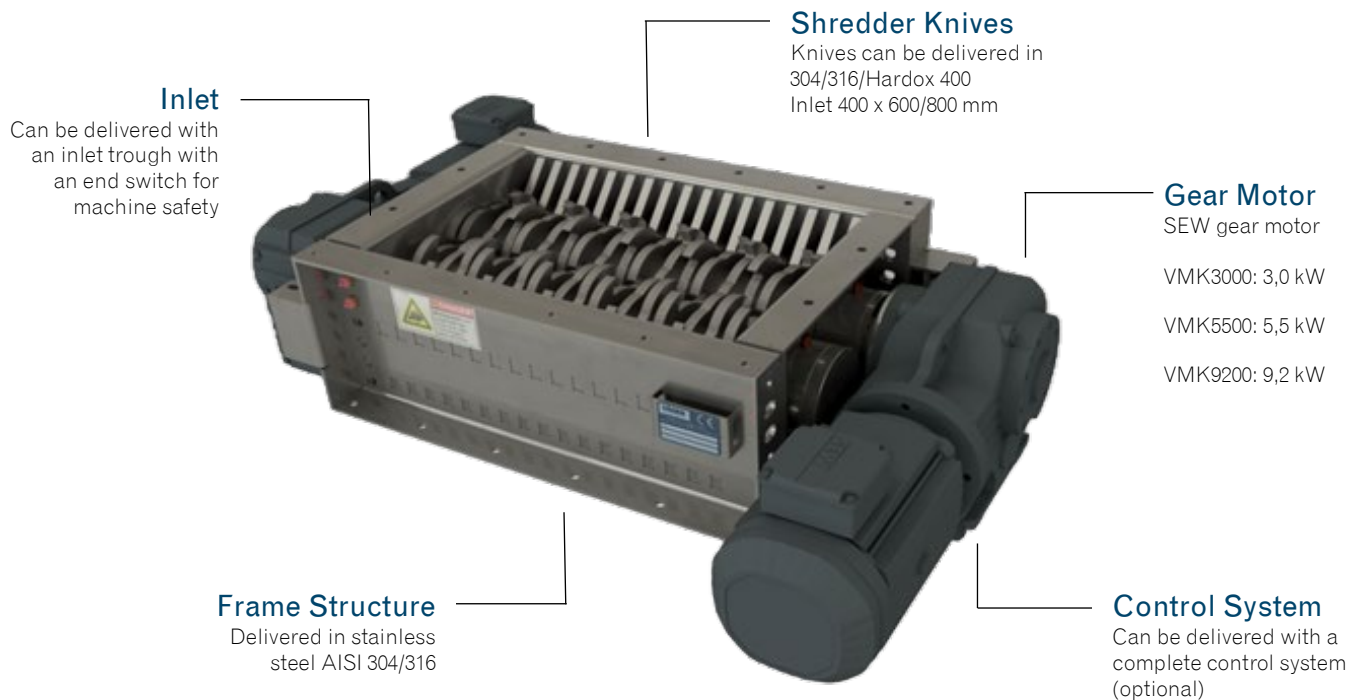


# Vågen Multi Shredder VMK



## Gear Motor

- SEW Gear Motor
- Other brands available on request

## Rotor

- AISI 304 / 316 / Hardox 400

## Frame Structure

- AISI 304 / 316

## Delivery Time

- Approximately 14 – 16 weeks

## Applications

- Recycling
- Food industry
- Slaughterhouses
- Agriculture
- Industry

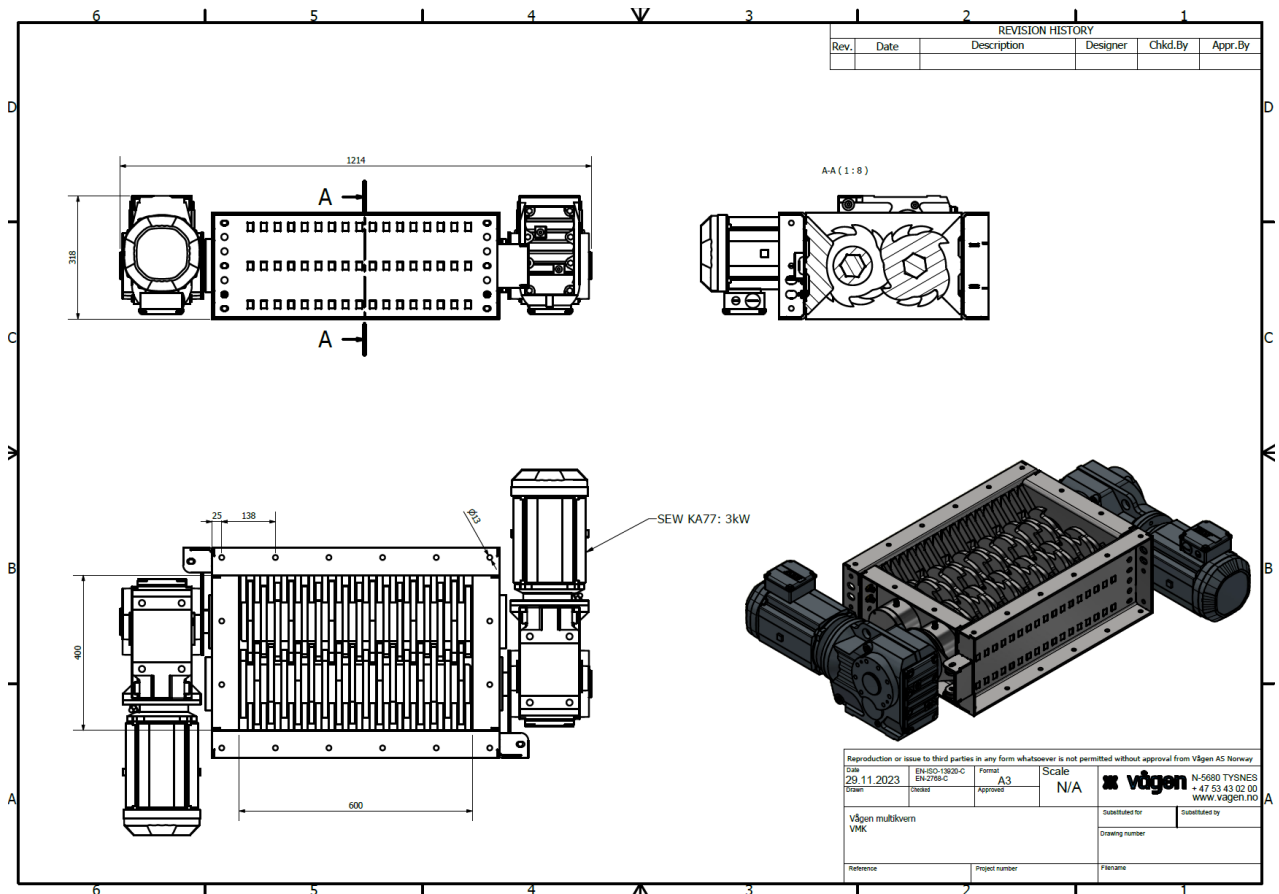
## VÅGEN MULTI SHREDDER - VMK

Robust and efficient for moderate tasks!

Our multi shredder, VMK, is designed for applications such as recycling, fishing, food industry and other processes that don't require high power. With an option for 3.0, 5.5 or 9.0 kW motor, it offers efficiency, reliability and customization for different tasks. Knife and spacing adjustments can be easily made, and a feed inlet tray with lid and end switch is available as an optional accessory. The machine uses technical solutions that reduce maintenance and simplify access to spare parts.

We can also deliver start-up applications and control systems, with frequency control for optimal speed regulation and operation, tailored to your specifications.

TYPE	INLET DIMENSION	POWER	CAPACITY
VMK 3000	600/800 x 400 mm	2x3 kW	0 - 10 m³/h
VMK 5500	600/800 x 400 mm	2x5,5 kW	0 - 10 m³/h
VMK 9200	600/800 x 400 mm	2x9,2 kW	0 - 10 m³/h



## GENERAL INFORMATION

- Standard components
- Energy-efficient drive units from reputable, high-quality suppliers
- Knife design adapted to the shredder's intended application
- SKF bearings
- Replaceable knives
- Knives in Hardox or stainless steel
- System customization available
- Frequency converters recommended
- Can be delivered with a complete control system using Siemens components as standard, or other brands upon request
- Protected against overload
- Support structures available
- Motor starters and control systems
- Electric operation with SEW gear motors
- Feed inlet tray with lid and end switch available
- Conformity in accordance with the Machinery Directive 2006/42/EC
- Compact dimensions
- We offer customized feeding and discharge solutions with feed trays, screw conveyors, and rotary feeders