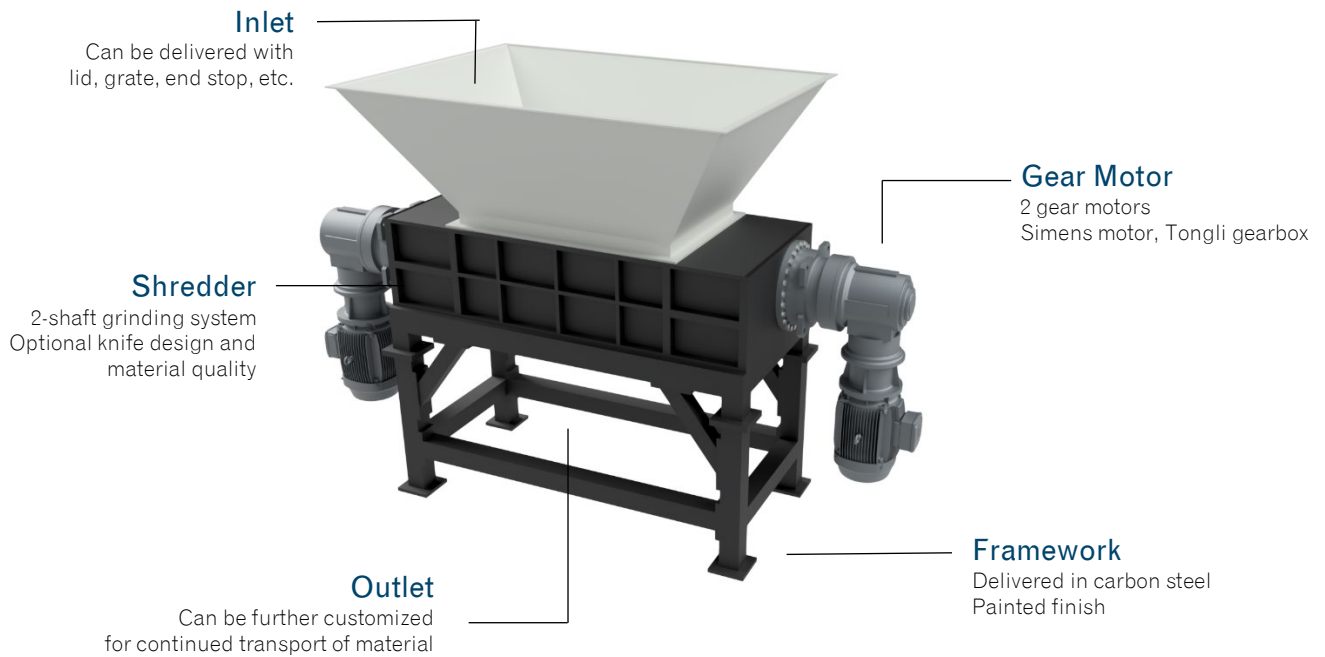


# Vågen TSX Shredder



## Gear Motor

2 x Siemens motors with Tongli gearboxes

## Rotor Blades

Hardox or other materials available upon request

## Framework

Carbon steel

## Delivery Time

20-24 weeks

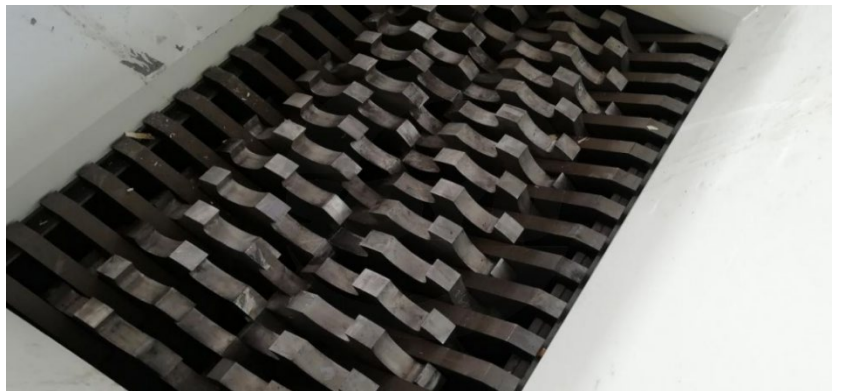
## Applications

Recycling  
Slaughterhouse  
Wood, plastic, and metal waste  
Agriculture

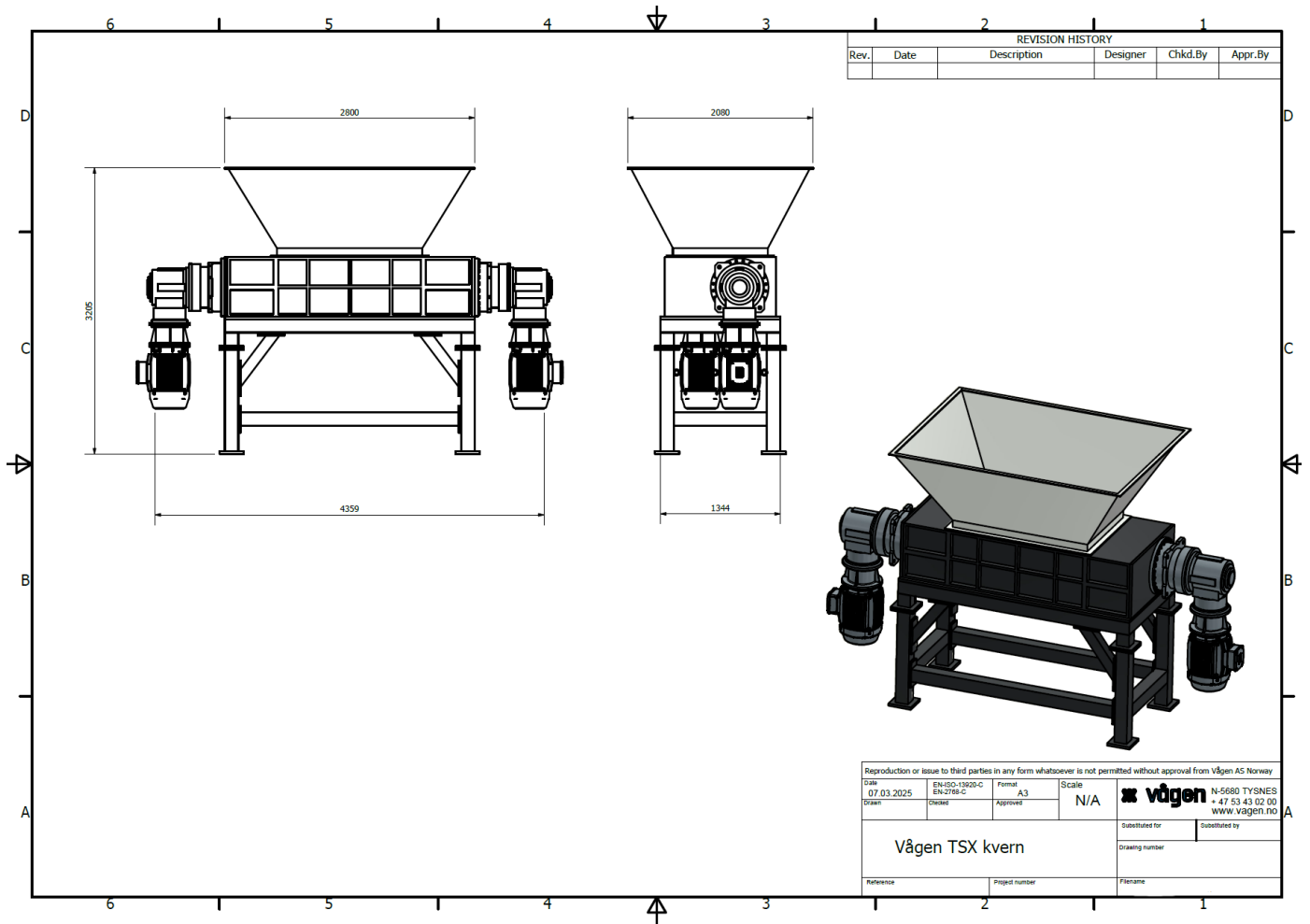
## TSX Shredder - Benefits

Vågen TSX shredder is an industrial low-speed, high-torque shredder. When materials is fed into the hopper, it is ground by two shredder rotors and discharged. Although the particle size at the outlet is unpredictable, two-shaft shredder provides faster material reduction and discharge compared to other shredders.

The shredder can be customized to meet the customer's specific need to ensure optimal operating conditions. It can be delivered with CE certification and equipped with Siemens PLC and control system. The system provides automatic detection and overload protection. The TSX shredder series, features high torque, robust construction, low noise levels, and low maintenance costs.



TYPE	INLET DIMENSION	SHREDDER DIMENSION	KNIFE ROTOR DIAMETER	POWER	WEIGHT
TSX7	900x900mm	810x510mm	Ø245 mm	7,5 + 7,5kW	1800 kg
TSX22	1100x1100mm	1200x660mm	Ø320mm	22+22kW	5000 kg
TSX45	1900x1900mm	1400x1050mm	Ø514mm	45+45kW	13000 kg



## GENERAL INFORMATION

- Standard components
- Knives can be customized to your needs
- Replaceable knives
- Knives made of Hardox, other materials available
- System adaptations
- Inlet hopper with lid and end switch, can be supplied
- Can be delivered with a complete control system and includes overload protection
- Conforms to the Machinery Directive 2006/42 EC
- Robust construction in carbon steel
- We customize feeding and discharge upon request