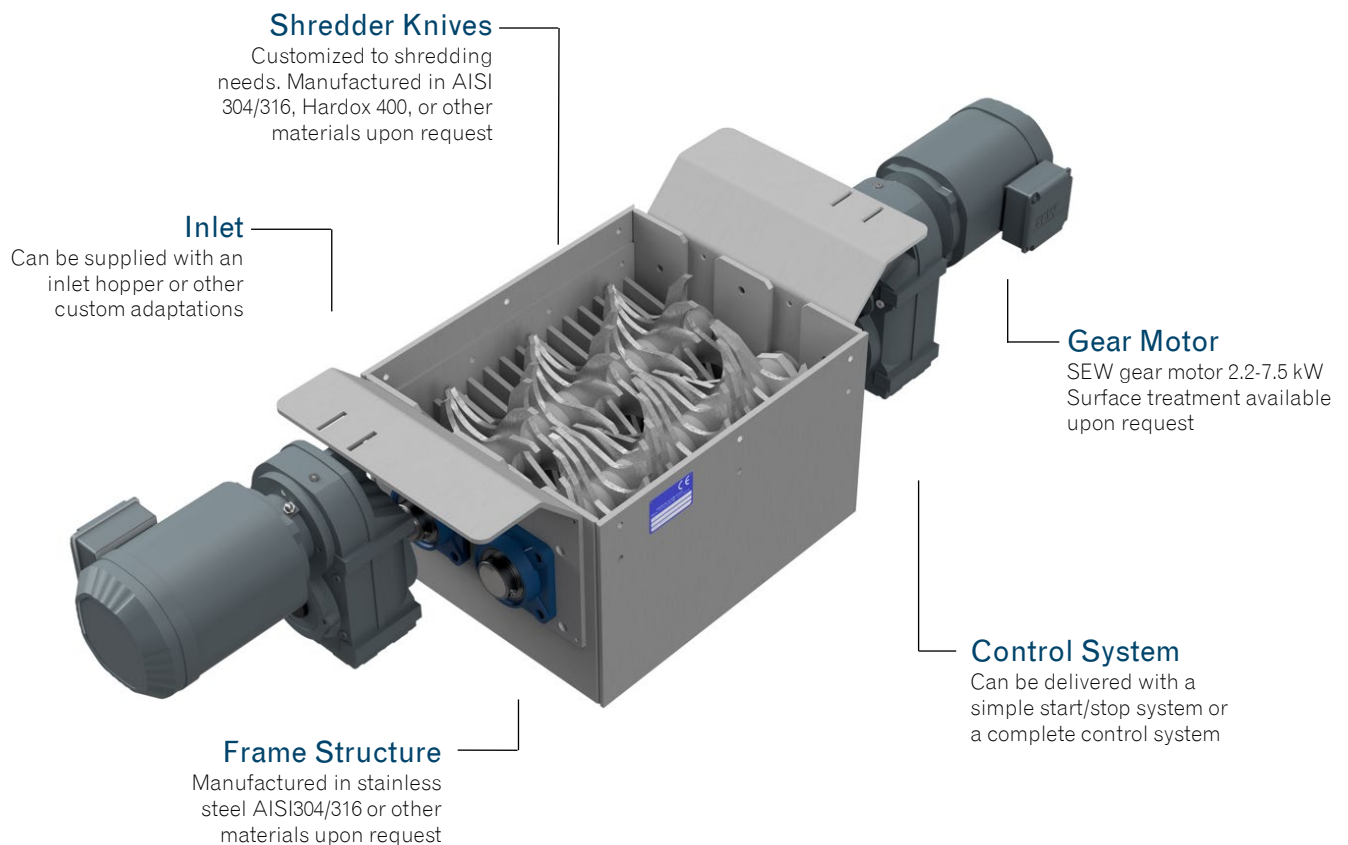


# Vågen Coarse Shredder VCS



## Gear Motor

SEW 2 x 2.2- 7.5 kw

Other brands available on request

## Rotor

Stainless steel AISI 304/316

## Frame Structure

Stainless steel AISI 304/316

## Delivery Time

Approx. 12-14 weeks

## Applications

Recycling  
Agriculture  
Fish industry  
Slaughterhouses

## VÅGEN COARSE SHREDDER VCS

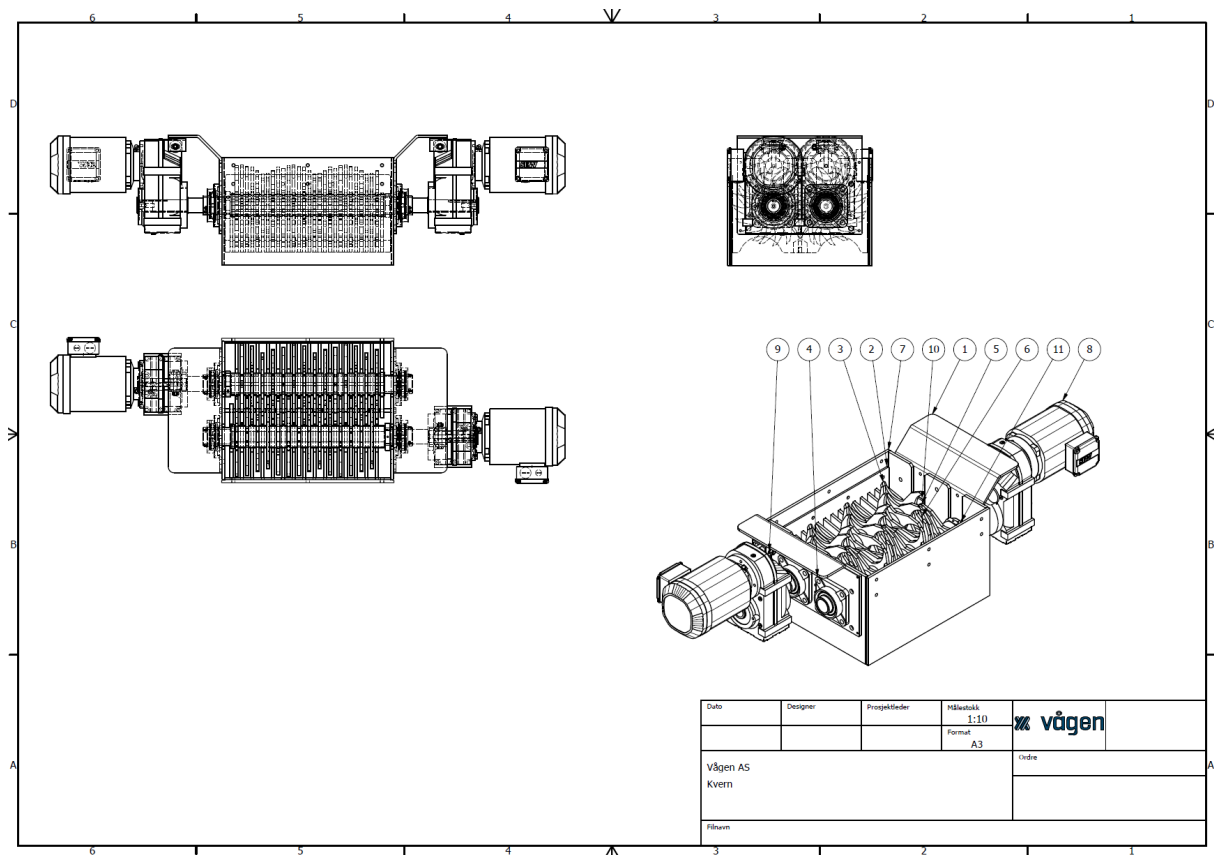
A cost-effective alternative!

We have developed our own coarse shredder, that can be easily adapted to various needs. The design of the knives and spacing can be modified as required.

The inlet hopper with lid is manufactured in AISI 304/316 stainless steel. Proven technical solutions are used to reduce maintenance costs and simplify access to spare parts. We can also supply the start-up applications and control systems you need for efficient operations.

## Dimensions

TYPE	DIMENTION	POWER	CAPACITY
VKK 2200	1734x486x437mm	2x 2,2kw	0-15m3/h
-	-	-	-



## General information

- Standard components
- High-quality and energy-efficient drives from reputable suppliers
- Knives can be customized to your needs
- SKF bearings
- Replaceable knives.
- Shredder knives available in different materials
- Spare parts in stock
- Stainless steel frame structure.
- System adaptations
- Electric operation with SEW gear motors
- Inlet hopper with lid and limit switch can be supplied
- Conformity in accordance with the Machinery Directive 2006/42/EC
- Compact dimensions
- Short delivery time
- We customize infeed and outfeed with hoppers, screws and rotary valves
- If you need smaller or larger shredder, we can also build those