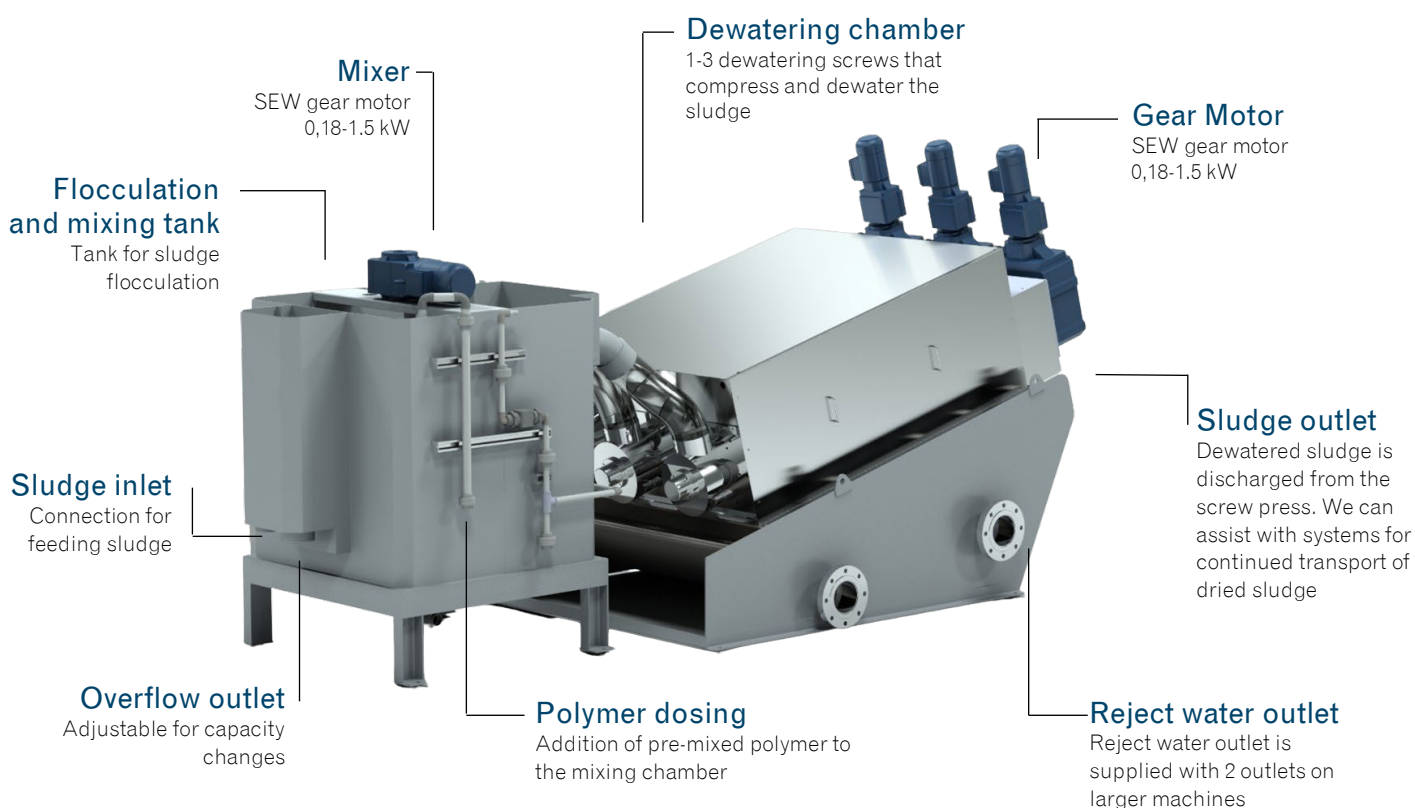


Vågen Multi Disc Screwpress



OIL & GAS

- Slop water
- Wastewater
- Process water
- ATEX zone 1 and 2

LAND-BASED INDUSTRY

- Slaughterhouse water
- Process water
- Food industry
- Wastewater

FISHING & AQUACULTURE

- Dewatering of bottom sludge
- Process water treatment
- Dry matter < 35%
- Slaughterhouse blood water

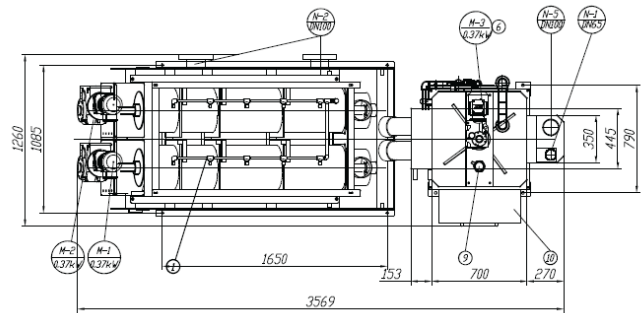
FILTERING AND DEWATERING IN THE SAME MACHINE

Vågen AS provides solutions for wastewater treatment plants, sewage, and sludge water from various processes. The main product in this process is the Vågen Multi Disc Screw Press, which utilizes various polymer additives to bind the waste in wastewater, sewage, and process water. Proven technical solutions are used to reduce maintenance costs and simplify access to spare parts.

Excellent results can be documented across most industries. Dry matter content ranges from 20% to over 30% depending on sludge type.

Can collect 97% of particles, from a concentration of 0.1-5%. Dewateres media that other machines cannot handle. Contact us for further information and availability of test.

SLUDGE	Recycling	Process water
Stainless steel & Acid-resistant steel	ISO	
CE	Dry matter 20-30%	
Oil og grease SS	Polymers	Transport cost
Energy-efficient	3D TS	VAR
		ATEX



Model	Wastewater Waste sludge Chemically precipitated sludge		Disolved flocculated sludge		Mixed raw sludge Sewage sludge
Sludge concentration (% TS)	0.2 %	1%	2%	5%	3%
MDS-101	~2.0kg-TS/t (~1.0m³/t)	~3.0kg-TS/t (~0.3 m³/t)	~5.0kg-TS/t (~0.25m³/t)	~10kg-TS/t (~0.2m³/t)	~13kg-TS/t (~0.43m³/t)
MDS-131	~4.0kg-TS/t (~2.0m³/t)	~6.0kg-TS/t (~0.6 m³/t)	~10kg-TS/t (~0.5m³/t)	~20kg-TS/t (~0.4m³/t)	~26kg-TS/t (~0.87m³/t)
MDS-132	~8.0kg-TS/t (~4.0m³/t)	~12kg-TS/t (~1.2 m³/t)	~20kg-TS/t (~1.0m³/t)	~40kg-TS/t (~0.8m³/t)	~52kg-TS/t (~1.73m³/t)
MDS-201	~8.0kg-TS/t (~4.0m³/t)	~12kg-TS/t (~1.2 m³/t)	~20kg-TS/t (~1.0m³/t)	~40kg-TS/t (~0.8m³/t)	~52kg-TS/t (~1.73m³/t)
MDS-202	~16.0kg-TS/t (~8.0m³/t)	~24kg-TS/t (~2.4 m³/t)	~40kg-TS/t (~2.0m³/t)	~80kg-TS/t (~1.6m³/t)	~104kg-TS/t (~3.47m³/t)
MDS-311	~20.0kg-TS/t (~10m³/t)	~30kg-TS/t (~3.0 m³/t)	~50kg-TS/t (~2.5m³/t)	~100kg-TS/t (~2.0m³/t)	~130kg-TS/t (~4.33m³/t)
MDS-312	~40.0kg-TS/t (~20m³/t)	~60kg-TS/t (~6.0 m³/t)	~100kg-TS/t (~5.0m³/t)	~200kg-TS/t (~4.0m³/t)	~260kg-TS/t (~8.67m³/t)
MDS-313	~60.0kg-TS/t (~30m³/t)	~90kg-TS/t (~9.0 m³/t)	~150kg-TS/t (~7.5m³/t)	~300kg-TS/t (~6.0m³/t)	~390kg-TS/t (~13m³/t)
MDS-412	~80.0kg-TS/t (~40m³/t)	~120kg-TS/t (~12m³/t)	~200kg-TS/t (~10m³/t)	~400kg-TS/t (~8.0m³/t)	~520kg-TS/t (~17.3m³/t)
MDS-413	~120.0kg-TS/t (~40m³/t)	~180kg-TS/t (~18m³/t)	~300kg-TS/t (~15m³/t)	~600kg-TS/t (~12m³/t)	~780kg-TS/t (~26m³/t)

- Municipal water and wastewater treatment plants
- Agriculture / fishery treatment plants
- Fishery slaughter & dewatering systems
- Waste and recycling
- Milk / meat processing plants
- Chemical factories
- Metal processing plants
- Laundry wastewater
- Biogas & composting plants
- Fat and oil-containing wastewater

- Energy-efficient
- Connections for automatic flushing and cleaning
- Manufactured in stainless steel and food-grade approved materials (AISI304/AISI316) or other materials upon request
- Conformity in accordance with the Machinery Directive 2006/42/EC
- Stocked spare-parts