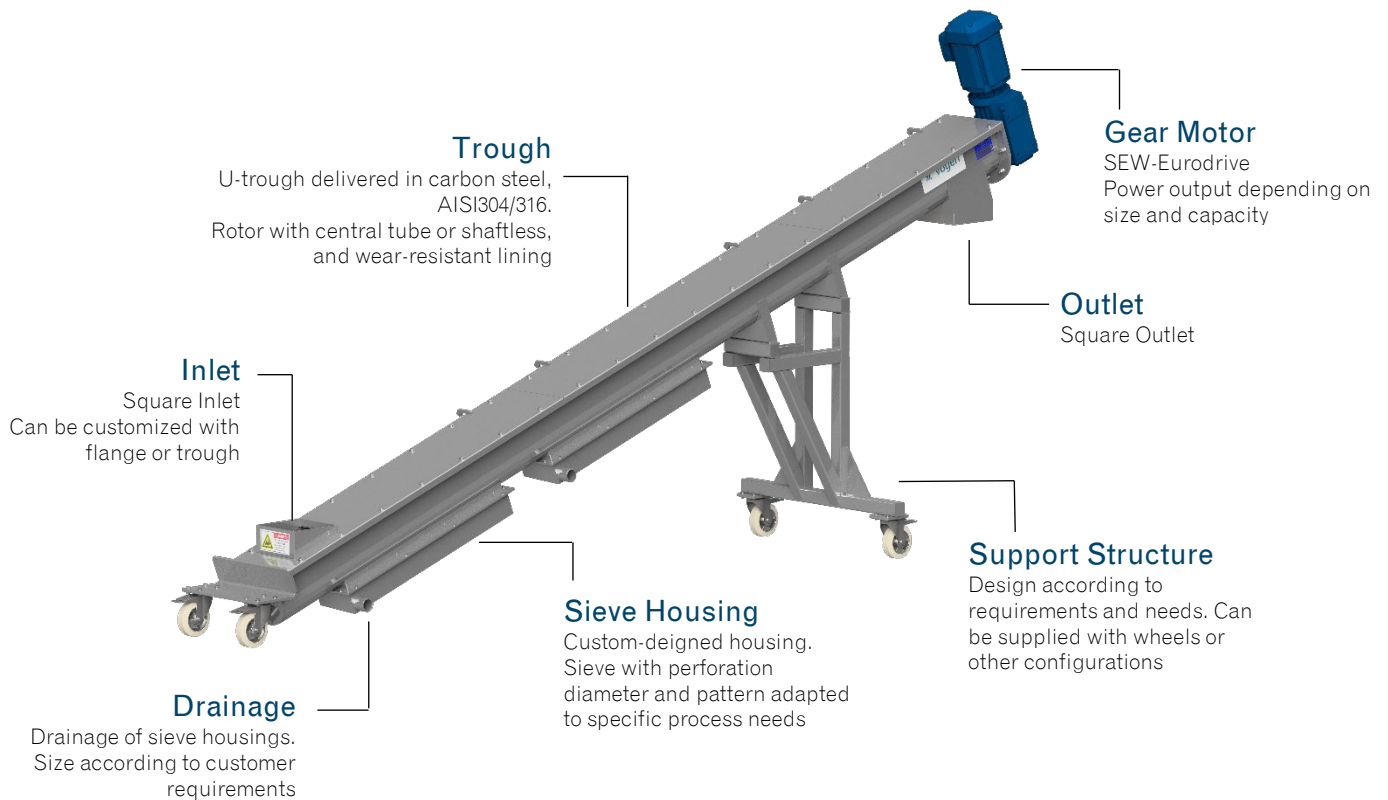


# Vågen Sieve Screw Conveyor



## Gear Motor

SEW gear motor  
Other brands available on request

## Rotor

AISI 316, 304, carbon steel  
Centerless

## Trough

AISI 316, 304, carbon steel

## Delivery Time

8-10 weeks

## Applications

Recycling  
Slaughterhouse  
Agriculture  
Fishing Industry

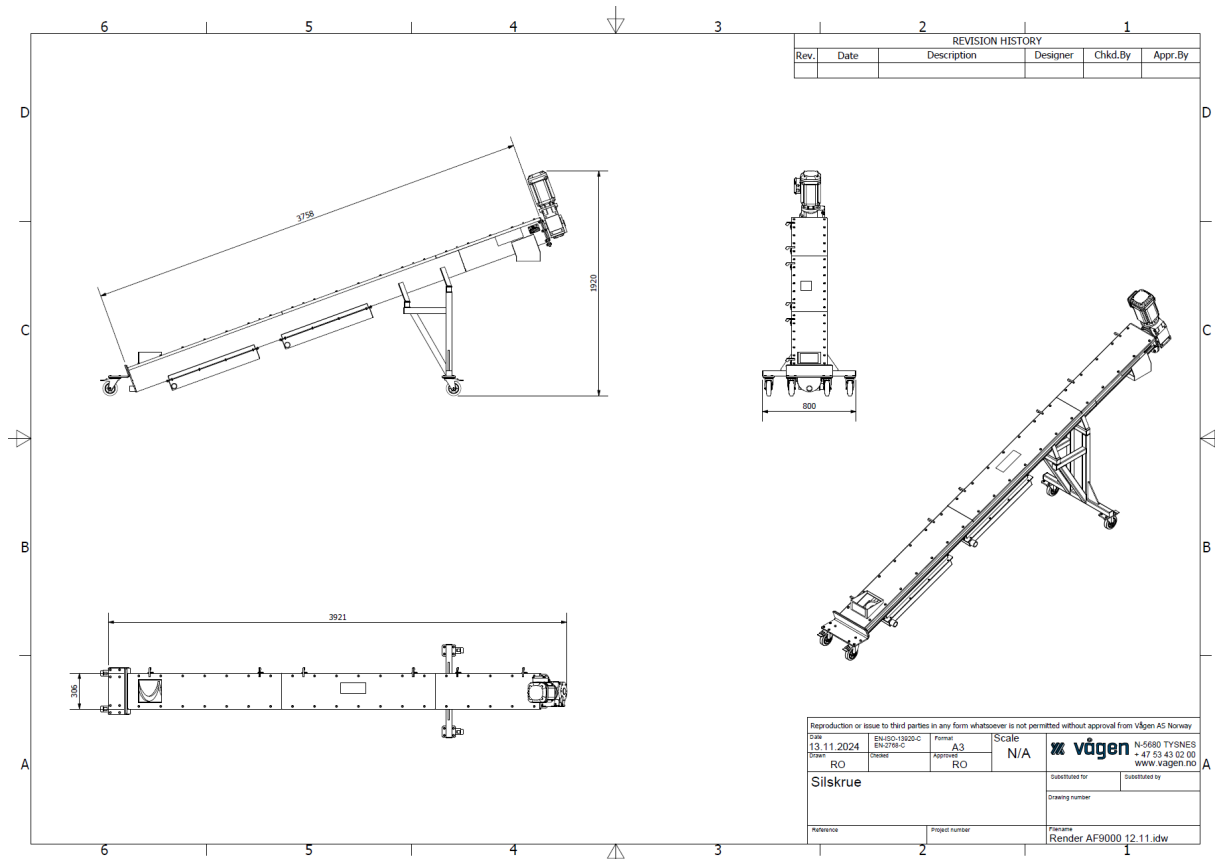
## VÅGEN STRAINER SCREWS

Mechanical dewatering is the most energy-efficient method for liquid/solid separation. A strainer screw combines transport and lifting with dewatering and is used to separate free water from solids.

Vågen strainer screws are durable and easy to maintain. The screw is equipped with one or more sieve boxes, and a sieve with the desired perforation size. The opening size will vary depending on needs and product. If required, additional sieve boxes can be installed along the screw for increased dewatering capacity.

## DIMENSIONS AND CAPACITY

| TYPE   | LENGTH       | DIAMETER    | CAPACITY                | ANGLE  |
|--------|--------------|-------------|-------------------------|--------|
| Stand. | 1000-6000 mm | Ø 100-600mm | 0-6m <sup>3</sup> /hour | 0-25 ° |



## GENERAL INFORMATION

- Standard components
- Energy-efficient drive units from SEW Eurodrive, high quality
- Dewatering with low energy consumption
- Manufactured in acid-resistant and food-grade approved material AISI 316, or other materials upon request
- Interchangeable sieves, perforated sieve with customized opening sizes
- System adaptations
- Option for automatic flushing and cleaning of the sieve and sieve box
- Conformity in accordance with the Machinery Directive 2006/42/EC
- Compact design