

Gearmotor

SEW Eurodrive
Other manufactures on request

Rotor

Carbon steel, AISI 304, AISI 316

Trough

Carbon steel, AISI 304, AISI 316

Delivery time

Ca 12-14 weeks

Applications

Recycling

Waste water treatment plant

Agriculture

Process industry

VÅGEN BATCH MIKSER - VBM

For dry powder products, where the goal is the most homogeneous mixture, we recommend batch mixing as the best option.

The size of the mixer and gear motor can be adjusted according to capacity requirements.

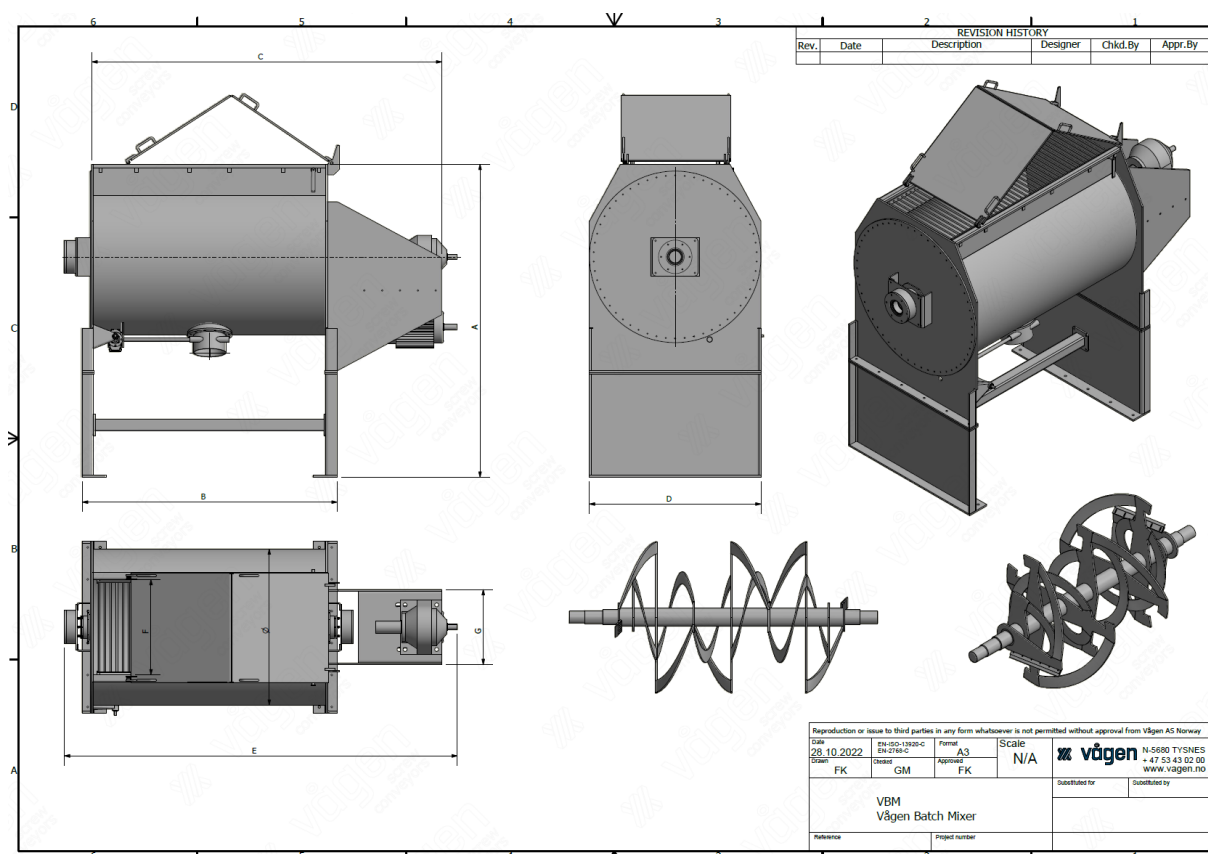
Sizes from 500 to 2500 liters.
We recommend frequency control for the mixer rotor.

We customize feeding and discharge with troughs, screws, rotary feeders, etc.

DIMENTIONS AND CAPACITY

TYPE	BATCH SIZE	DIAMETER	CAPACITY
VBM	500-2500L	Ø500mm -	On Request

Vågen Batch Mixer VBM



GENERAL INFORMATION

- Standard components
- Can be made in various sizes depending on capacity requirements
- Energy-efficient drive units from SEW Eurodrive with high quality
- Manufactured in acid-resistant and food-grade approved material AISI 316 or other materials upon request
- Stainless steel rotor and trough, other materials available
- Conformity in accordance with the Machinery Directive 2006/42/EC
- Can be supplied with frequency control
- The mixer is designed based on the medium to be mixed
- Inlet and outlet are customized to your needs