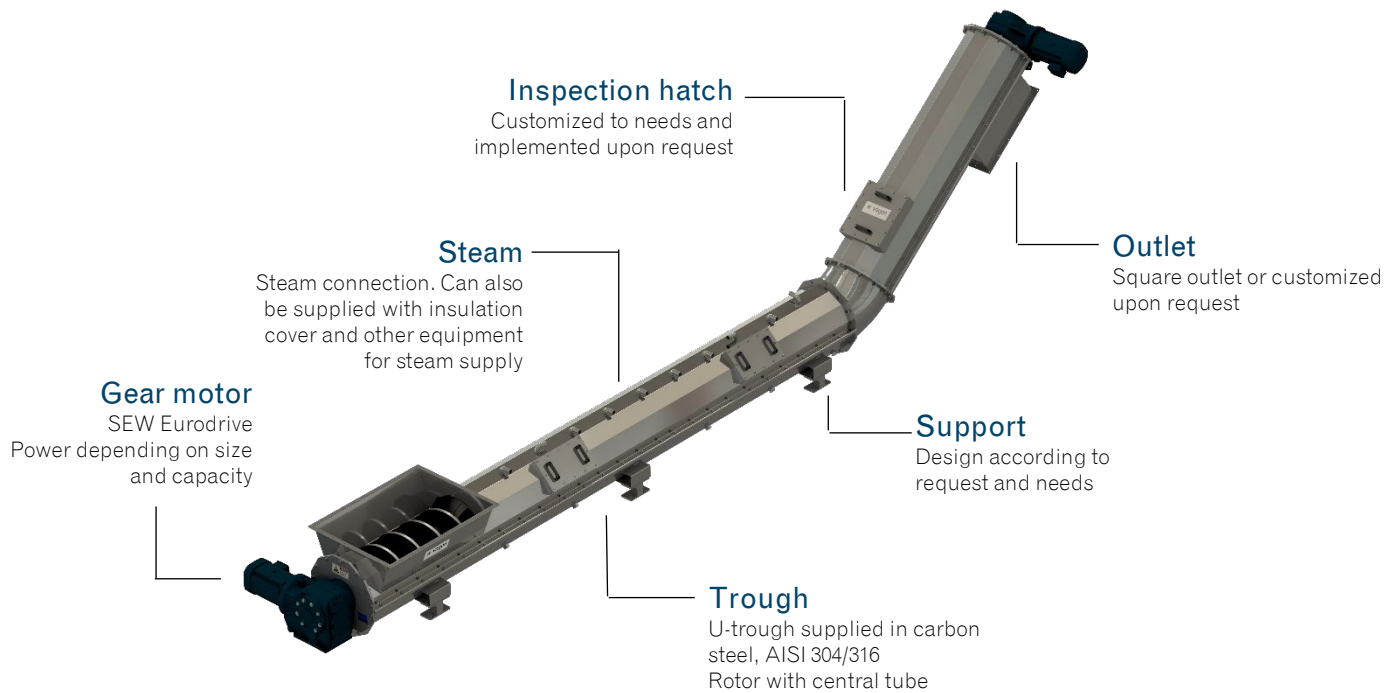


# Vågen Steam screw



## Gear motor

SEW 1 x 1,5kW  
Other brands available upon request

## Rotor

AISI 316, 304

## Trough

AISI 316, 304

## Delivery time

8-10 weeks

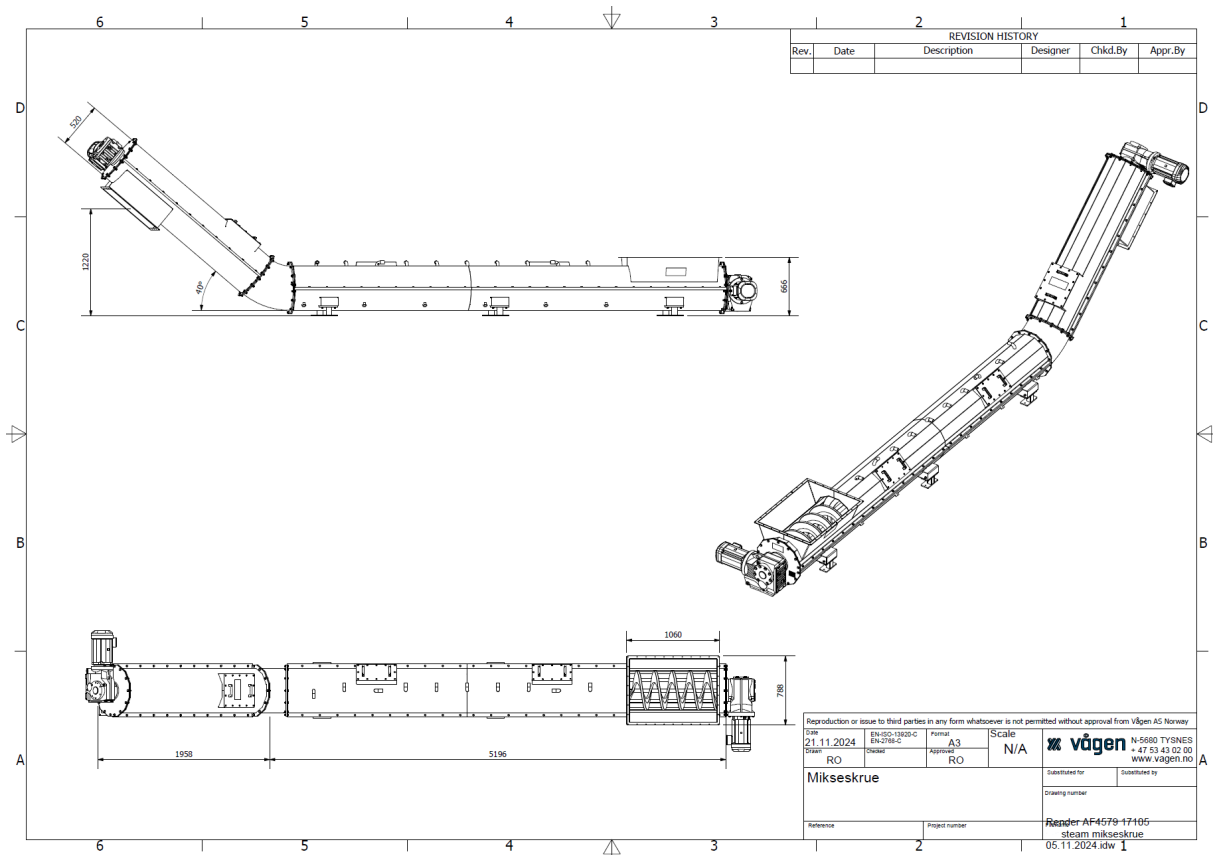
## Applications

Recycling  
Food industry  
Food production  
Biomass handling

## VÅGEN STEAM SCREWS

Vågen Steam Screws with steam connection, offer a unique advantage by combining transport and processing into an efficient solution. The transport screw enables the treatment of products such as steaming, heating, or sterilization, reducing the need for separate process stages and machines.

Steam can be used to alter the physical properties of the product, such as softening materials, improving binding capacity, or preparing it for further processing. Insensitive applications, such as in the food industry, steam can be used for sterilization or moisture adjustment, ensuring a hygienic end product. Integrating steam into the transport screw helps save space, reduce energy consumption, and increase efficiency, while providing greater control over process parameters like temperature and humidity. This makes them ideal for industries that require precise processing and transport, such as food production, pharmaceuticals, and biomass handling.



## GENERAL INFORMATION

- Standard components
- Energy-efficient drive units from SEW Eurodrive with high quality
- Manufactures in acid-resistant and food-grade material AISI 316, or other materials upon request
- Combined transport and processing
- Precise and efficient process control
- Energy-saving solution
- Connection for automatic flushing and cleaning of the sieve and sieve box
- CE marked and in accordance with the Machinery Directive
- Compact dimensions
- Hygienic and gentle processing, ideal for sensitive products