

## Gearmotor

SEW Eurodrive  
Other brands upon request

## Rotor

Carbon steel, AISI 304, AISI 316

## Trough

Carbon steel, AISI 304, AISI 316

## Delivery time

12-14 weeks

## Applications

Recycling  
Waste treatment plant  
Agriculture

## VÅGEN PADDLE MIXER – VPM

Vågen Paddle mixer is an efficient machine for the hygienization of sludge with quicklime.

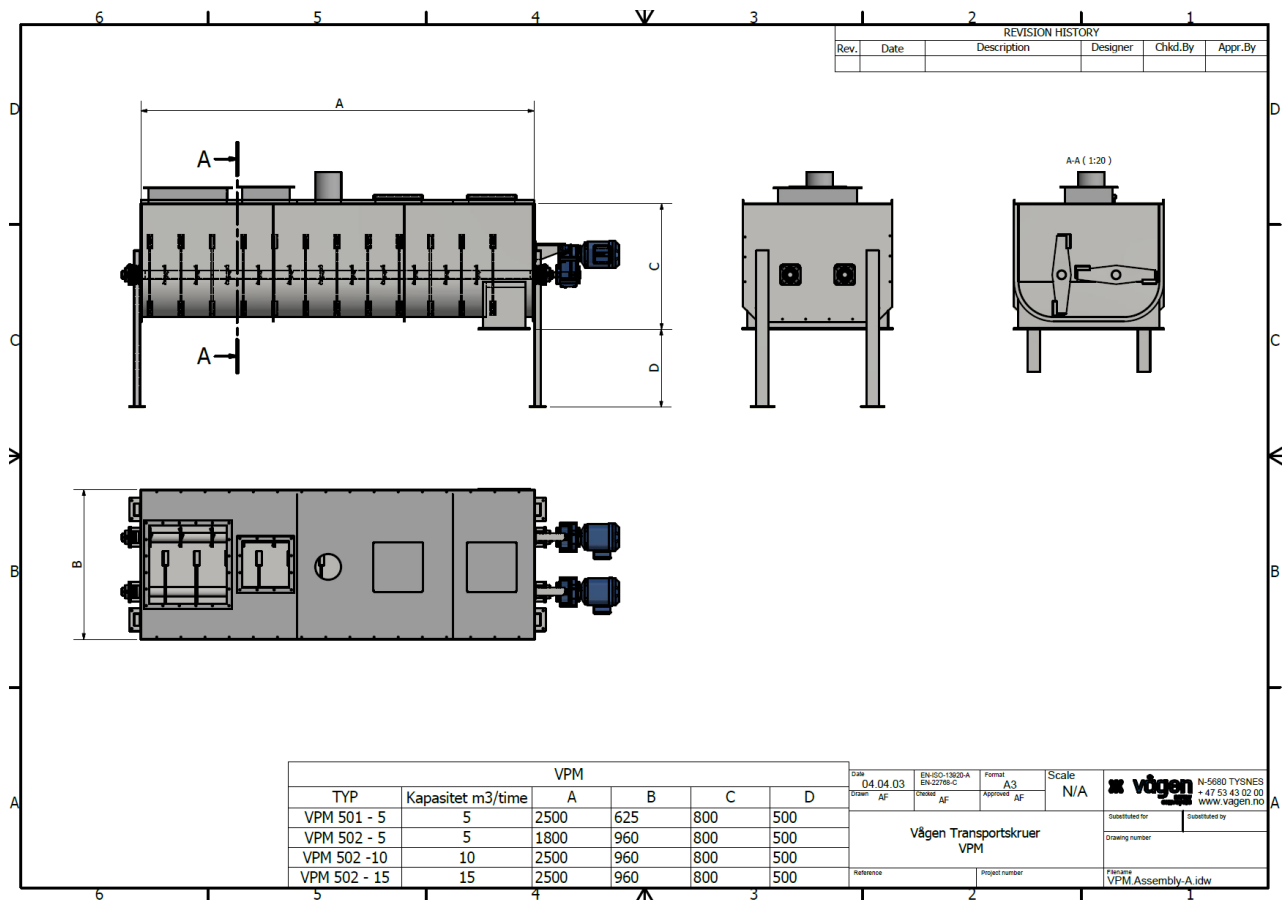
For continuous mixing with low energy consumption.

The paddle mixer can be equipped with adjustable paddles to alternate between batch mixing and paddle mixing.

Depending on capacity requirements, it can be designed in various sizes, as well as with single or double shafts.

Refer to capacity tables below

| TYPE     | DIMENTIONS      | CAPACITY             | EFFEKT |
|----------|-----------------|----------------------|--------|
| 501 - 5  | 2500x625x800 mm | 5 m <sup>3</sup> /h  | 5,5 kW |
| 502 - 5  | 1800x960x800 mm | 5 m <sup>3</sup> /h  | 5,5 kW |
| 502 - 10 | 2500x960x800 mm | 10 m <sup>3</sup> /h | 10 kW  |
| 502 - 15 | 2500x960x800 mm | 15 m <sup>3</sup> /h | 15 kW  |



## GENERELL INFORMASJON

- Standard components
- Can be manufactured with with adjustable padles
- Energy-efficient drive units from SEW Eurodrive with high quality
- Manufactured in stainless and food-grade material AISI 304/316 or other materials upon request
- Single or double shaft, depending on the capacity requirements.
- Inspection hatches
- Pipe connection for air extraction
- CE marked and compliant with the Machinery Directive
- The mixer is designed based on the media to be mixed
- Inlets and outlets customized to your needs