

## Gearmotor

SEW Eurodrive  
Other brands on request

## Rotor

Carbon steel, AISI 304, AISI 316

## Trough

Carbon steel, AISI 304, AISI 316

## Delivery time

12-14 weeks

## Applications

Recycling

Sewage treatment

Agriculture

Process industry

## VÅGEN BATCH MIKSER - VBM

For dry powder products, where a highly homogeneous mixture is desired, we recommend batch mixing as the best option.

The size of the mixer and gear motor can be adjusted according to capacity requirements.

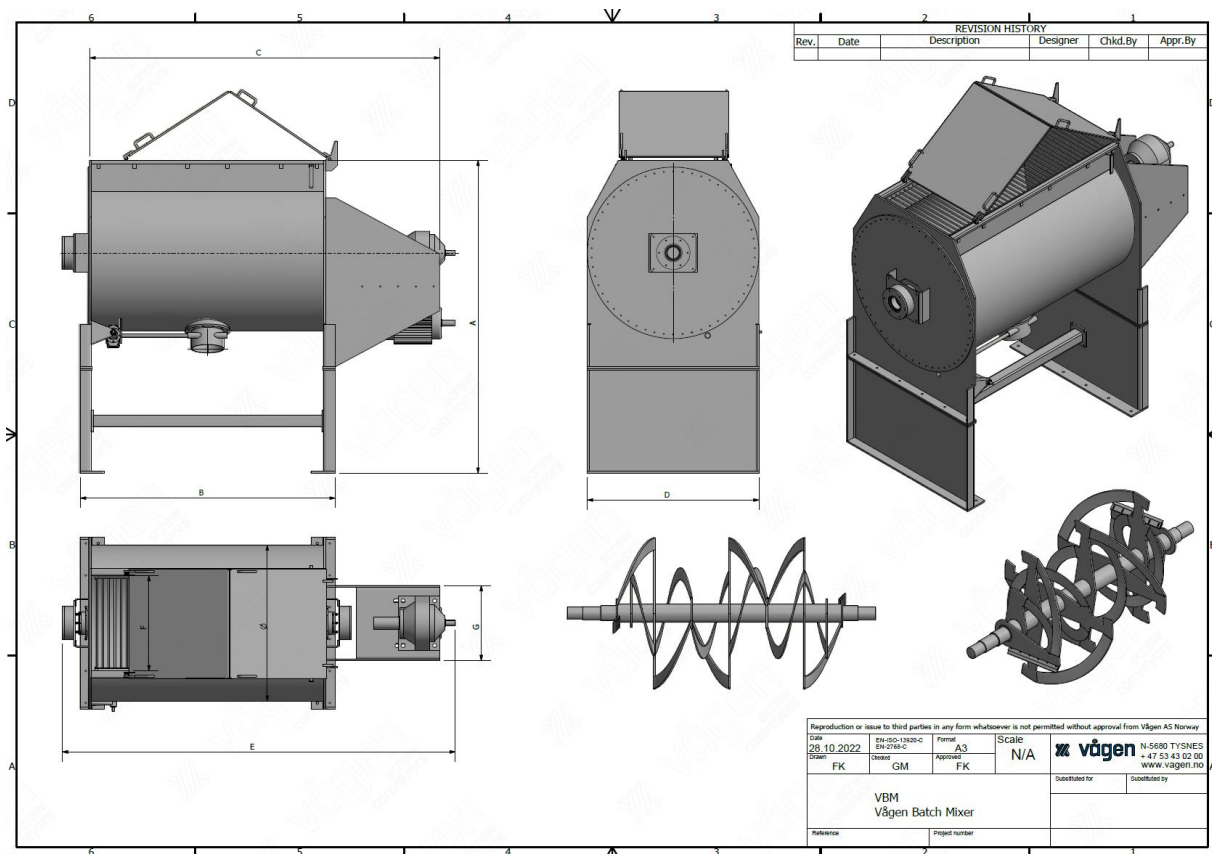
Available sizes range from 500 to 2500 liters.  
We recommend frequency control for the mixer rotor.

We customize feeding and discharge with hoppers, screws, rotary feeders, etc.

## DIMENSIONS AND CAPACITY

| TYPE | BATCH SIZE | DIAMETER | CAPACITY   |
|------|------------|----------|------------|
| VBM  | 500-2500L  | Ø500mm - | On Request |

# Vågen Batch Mixer VBM



## GENERAL INFORMATION

- Standard components
- Can be manufactured in various sizes depending on capacity requirements
- Energy-efficient drive units from SEW Eurodrive with high quality
- Manufactured in stainless steel and food grade material AISI304/316 or other materials upon request
- Stainless steel rotor and trough
- CE marked and compliant with the Machine Directive
- Can be supplied with frequency control
- Mixer designed based on the media to be mixed
- Inlets and outlets customized to your needs