

Vågen Multi Shredder VMK9200



Gear motor

SEW 2 x 9,2 kW

Other manufacturers on request

Rotor

AISI 304 / 316 / Hardox 400

Frame

AISI 304 / 316 / Hardox 400

Delivery time

10 – 12 weeks

Applications

Recycling

Industry

Slaughterhouse

Agriculture

VÅGEN MULTI SHREDDER - VMK 9200

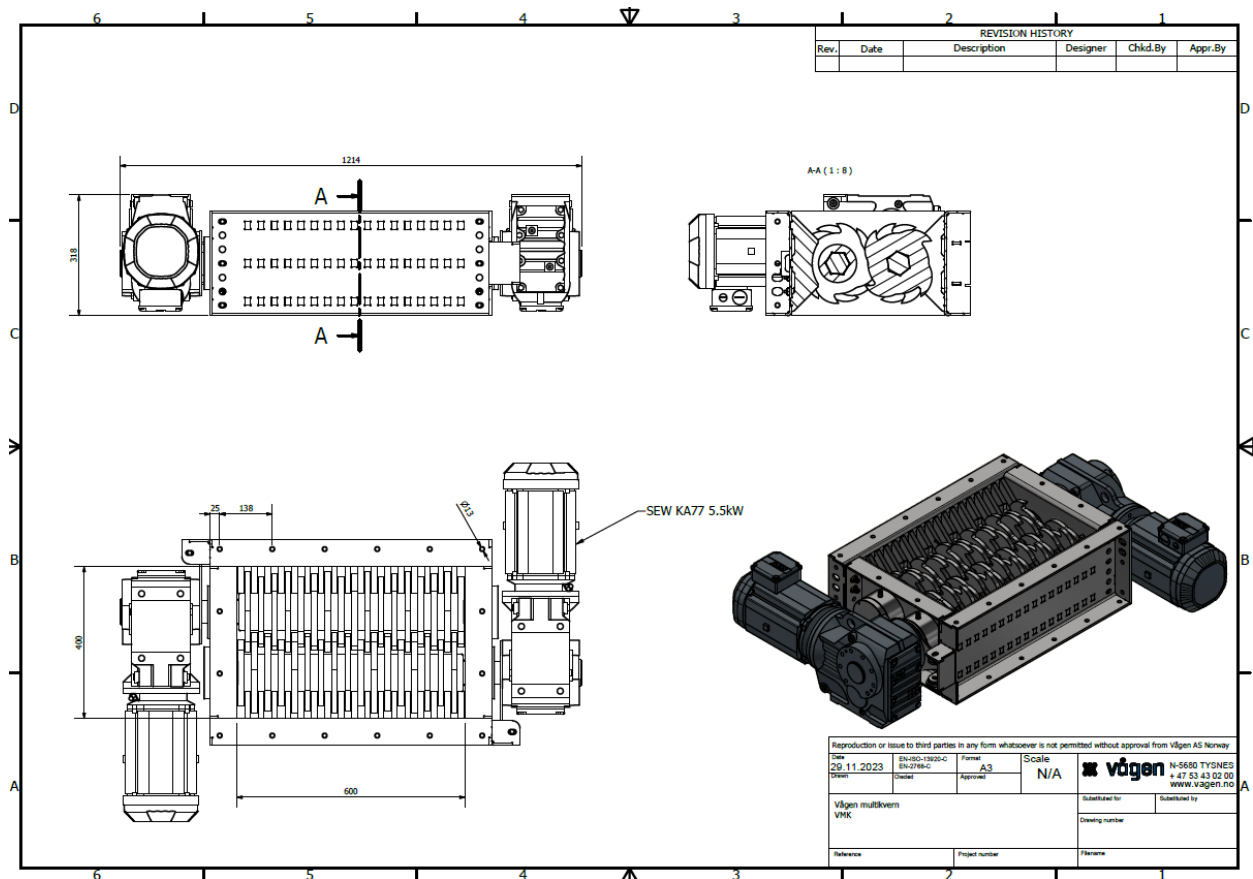
Powerful and reliable for the toughest challenges!

The VMK9000 is our most powerful machine, developed for the heaviest tasks that require high torque, such as crushing the toughest materials. With a 9.0kW motor, it can handle significant loads and difficult processes with ease. Knife and gap adjustments provide flexibility for different needs, and an inlet hopper with a lid and limit switch can be delivered. The machine is designed with solid technical solutions that reduce maintenance costs and make spare parts easy to replace.

We also offer start-up applications and control systems, with frequency control for optimal speed regulation, all according to your specifications.

TYPE	DIMENSION INLET	POWER	CAPACITY
VMK 9200 SHORT	600 x 400mm	2x9,2kW	0 - 6,6 m³/h
VMK 9200 LONG	800 x 400mm	2x9,2kW	0 - 10 m³/h
VMK 9200S	Control cabinet with Siemens S7-1200 PLS		
VMK 9200E	External tablet for start/stop and emergency stop		

Vågen Multi Shredder VMK9200



GENERELL INFORMASJON

- Standard components.
- Energy efficient drive units from recognized manufacturers with high quality.
- Knives can be adjusted.
- SKF bearings
- Replaceable knives.
- Shredder knives in Hardox or stainless, other materials can be delivered.
- In-stock spare parts.
- System adaptability.
- Frequency converters recommended.
- Siemens PLC S7 1200.
- Secured against overload.
- Supports can be delivered.
- Motor starter and control system.
- Electrical operation with SEW gearmotors.
- Inlet trough with lid and limit switches can be delivered.
- CE marked and in acc. to the Machine Directive.
- Compact.
- Input and output are adjusted with troughs, screws, and cell feeders.
- We can also deliver larger or smaller shredders if needed.